

LOGO SIZING INFORMATION

Stock logos will be printed 100% of size shown unless enlargement or reduction is requested. Any change in logo size should be clearly indicated.

Below are samples to be used as guidelines when requesting changes in stock logo size.

75%

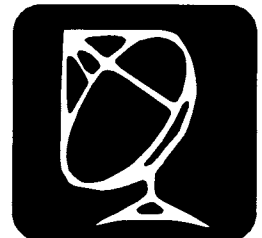
100%

125%

150%

175%

200%



COPYRIGHT NOTICE

The logos contained in this catalog may be owned by others and their use may require permission from the owner.

The printer assumes no responsibility for determining whether any logo is owned by others or for obtaining permission from the owner for use of the logo.

User assumes responsibility for compliance with all copyright laws when requesting any logo in this catalog to be printed on their order.

Any customer requesting the use and reproduction of these trademarks or servicemarks warrants to the printer that proper authorization has been received for their use.

EM — ENTERTAINMENT – MUSIC



EM-101



EM-103



EM-105



EM-107



★ EM-109



★ EM-111



★ EM-113



EM-115



★ EM-117



EM-119



EM-121



EM-123



EM-125



EM-127



EM-129



EM-131



EM-133



★ EM-135



EM-137



★ EM-139



★ EM-141



★ EM-143



EM-145



EM-147



★ EM-149



EM-151



EM-153



EM-155



★ EM-157



EM-159



EM-161



★ EM-163



★ EM-165



★ EM-167



★ EM-169



EM-171



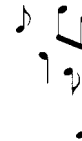
EM-173



EM-175



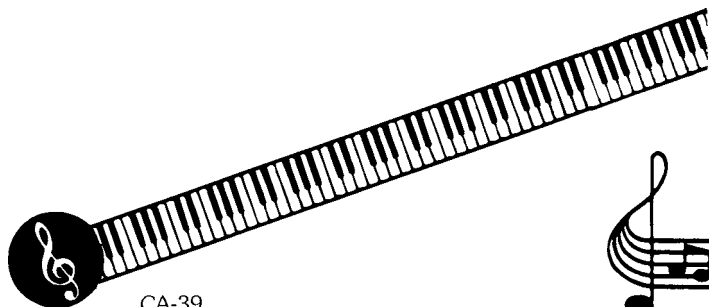
CA-47



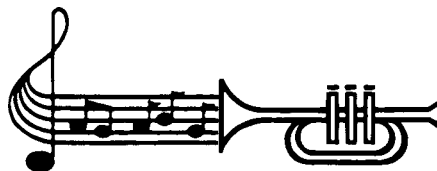
CA-48



EM-177



CA-39



CA-26



EM-179

Logos indicated by (★) are not recommended for foil stamping.